

**Our Cargo offering covers transportation, stock throughput, standalone stock and stock excess of loss for a range of goods including machinery, clothing, manufactured goods, military/defence equipment, electronic devices, steel, oil and gas, and semi-conductors.**

With specialist underwriters and dedicated claims handlers, we provide underwriting expertise, breadth of cover and professional claims service.

We have underwriting presence in London and Asia, providing customers with global expertise that is delivered locally.

We are able to bespoke policies and provide extensions or additions to cover. Coverage is available on a ground up or excess of loss basis and policy forms are specific to the insured's industry. Our policies are issued on a worldwide basis and can be adjusted based on insured's company turnover.

### Target Markets

- Oil and gas industry
- Machinery
- Project cargo/DSU
- Steel
- Air spares
- Electronic equipment/devices
- Semi-conductors
- Clothing
- Manufactured goods
- Military/defence equipment

### Capacity

- Company – USD 50M any one risk
- Lloyd's – USD 30M any one risk

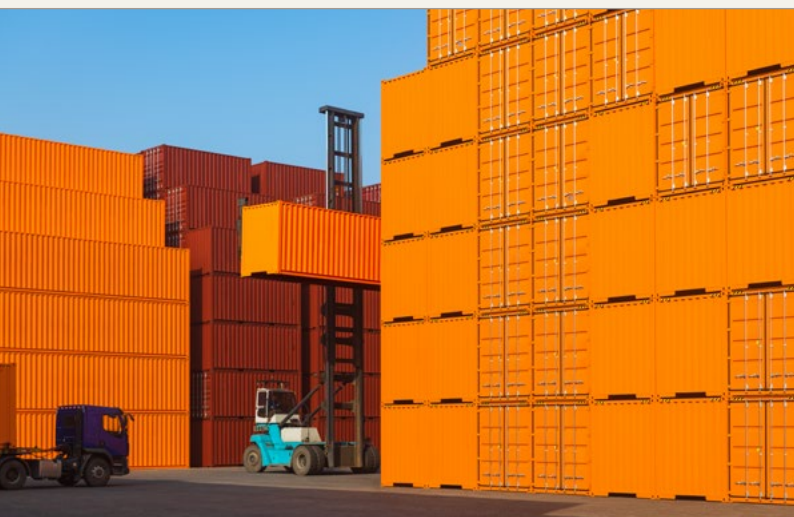
\*or equivalent in GBP or EUR, subject to Lloyd's PIM rates

### Exclusions

- Communicable disease
- Malicious cyber
- Radioactive contamination
- Sanctioned territories or individuals

### Coverage




- Transportation
- Stock throughput
- Standalone stock
- Stock excess of loss
- Coverage is available on an all-risk basis
- War/SRCC included
- Extensions of cover are available



## Distribution

Distribution	Locations	Wordings	Stamps	Europe
Our policy is distributed via brokers. We have underwriting presence in London, Dubai and Asia.	Our policy is available worldwide.	We use Markel and market wordings.	We use MIICL, MISE, Syndicate 3000 and LBS.	We cover EEA and non-EEA risks.

## Appetite

	 Target	 Will Consider	 Polite Decline
Primary	<ul style="list-style-type: none"> <li>Oil and gas/chemicals</li> <li>Heavy/light machinery</li> <li>Project cargo/DSU and construction equipment (not in use)</li> <li>Steel and pipes</li> <li>Air spares</li> <li>Electronic components and semi-conductors</li> <li>Telecommunication equipment (excluding mobile phones)</li> <li>Clothing and materials</li> <li>General manufactured goods</li> </ul>	<ul style="list-style-type: none"> <li>Satellite pre-launch</li> <li>Lumber</li> <li>Arms and ammunition</li> <li>Healthcare products</li> <li>Perfume and cosmetics</li> <li>Non-ferrous metals</li> </ul>	<ul style="list-style-type: none"> <li>Pharmaceutical</li> <li>Fresh fruit and produce</li> <li>Rejection</li> </ul>
Excess	<ul style="list-style-type: none"> <li>Dairy products</li> <li>Frozen and chilled goods including meat/ fish, fish oil and meal</li> <li>Juices, soft drinks, wines and spirits</li> <li>Tea/coffee</li> <li>Tobacco and cotton</li> <li>Fertilizer</li> <li>Vehicles</li> <li>Grain, sugar, rice, seeds and nuts</li> <li>Mobile phones and tablets</li> </ul>		

## Contact

<b>Brook Styles</b> Head of Cargo <a href="mailto:brook.styles@markel.com">brook.styles@markel.com</a>	<b>Richard Burnett</b> Senior Underwriter <a href="mailto:richard.burnett@markel.com">richard.burnett@markel.com</a>	<b>Graham Williams</b> Senior Underwriter <a href="mailto:graham.williams@markel.com">graham.williams@markel.com</a>
--	--	--

## Confidence in claims

We see ourselves as enterprising but measured, delivering insurance solutions that are effective as well as innovative, and listening carefully and working transparently with our business partners and clients. At the heart of everything we do is an unshakeable commitment to fairness and respect. We meet client needs with confidence because we’re driven by a long history of industry leadership and expertise.



Whether you are a business, organization, or individual, when the unexpected happens, we are passionate about getting you back on track.

Contact details and information about our claims service can be found here:

[www.markel.com/claims](http://www.markel.com/claims)